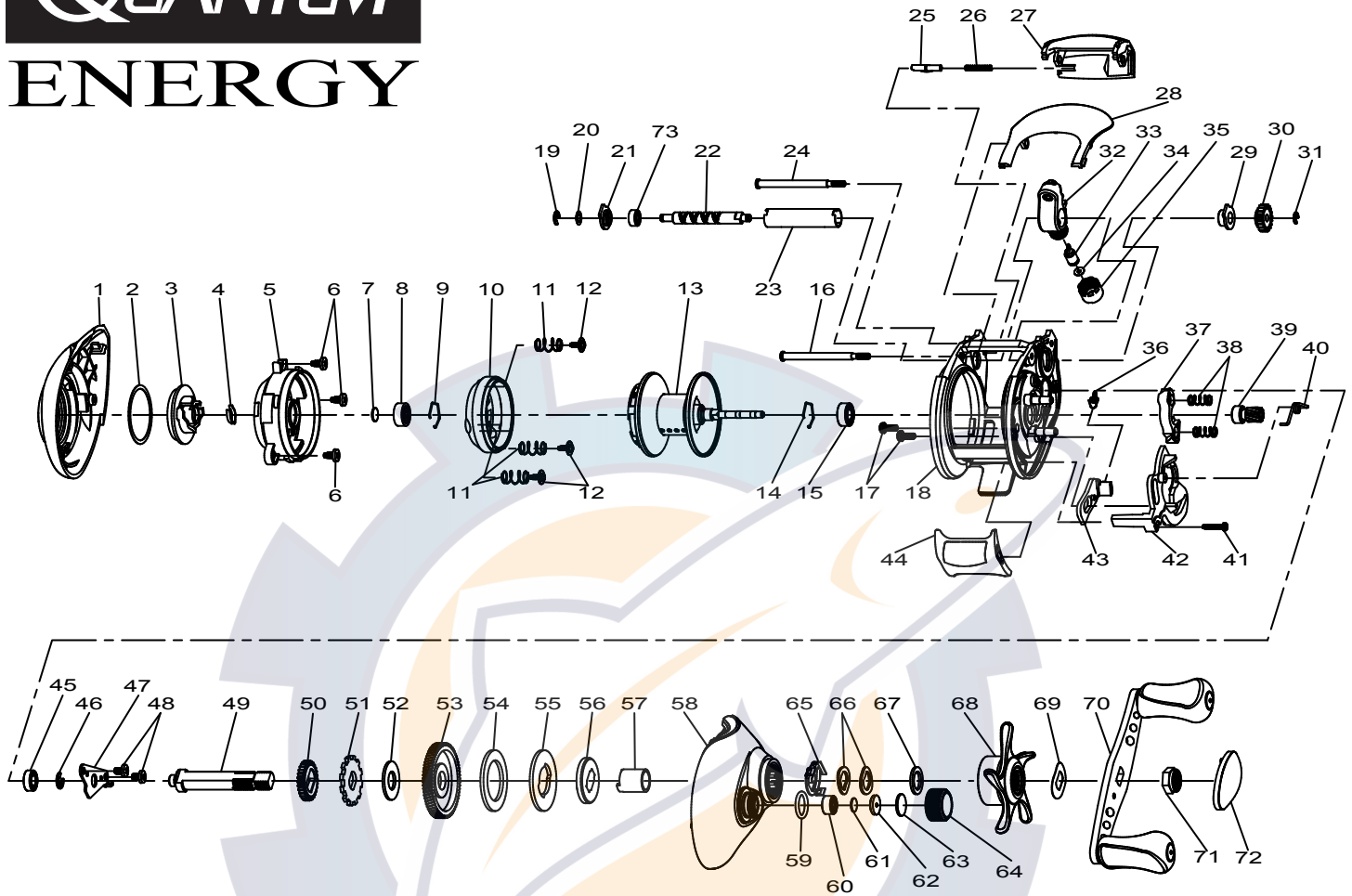




E600PT, E640PT, & E650PT



Key #	Description	E600PT	E640PT	E650PT
1	Palm Side Cover Assembly	CX323-03	CX323-05	CX323-04
2	Centrifugal Dial Washer	QV111-01	QV111-01	QV111-01
3	Centrifugal Dial Assembly	CX326-01	CX326-01	CX326-01
4	Centrifugal Dial Spring	CX108-01	CX108-01	CX108-01
5	Spool Cover	CX051-01	CX051-01	CX051-01
6	Spool Cover Screw	QV125-01	QV125-01	QV125-01
7	Spool Tension Shim	QW032-04	QW032-04	QW032-04
8	Spool Shaft Ball Bearing - Palm	QV017-01	QV017-01	QV017-01
9	Clip Ring	HV080-01	HV080-01	HV080-01
10	Brake Ring Assembly	HV342-02	HV342-02	HV342-02
11	Brake Ring Retainer Spring	QV070-01	QV070-01	QV070-01
12	Brake Ring Retainer Screw	CX076-01	CX076-01	CX076-01
13	Spool Assembly	AX321-01	AX321-01	AX321-01
14	Clip Ring	HV080-01	HV080-01	HV080-01
15	Spool Shaft Ball Bearing - Gear	JX106-01	JX106-01	JX106-01
16	Stabilizer Bar	CX061-01	CX061-01	CX061-01
17	Gear Side Cover Screw	BV123-01	BV123-01	BV123-01
18	Frame	CX001-02	CX001-04	CX001-03
19	E-Clip	NX090-01	NX090-01	NX090-01
20	Worm Shaft Washer	QW035-03	QW035-03	QW035-03
21	Worm Shaft Bearing Retainer	CX067-01	CX067-01	CX067-01
22	Worm Shaft	HV072-02	HV072-02	HV072-02
23	Worm Shaft Guide	HV016-01	HV016-01	HV016-01
24	Stabilizer Bar	CX061-01	CX061-01	CX061-01
25	Side Cover Locking Lever	CX119-01	CX119-01	CX119-01
26	Side Cover Locking Lever Spring	ZW096-01	ZW096-01	ZW096-01
27	Front Support	CX099-03	CX099-05	CX099-04
28	Hood	CX027-02	CX027-04	CX027-03
29	Worm Shaft Bushing - Gear	HV068-01	HV068-01	HV068-01
30	O/S Pinion Gear	HV085-01	HV085-01	HV085-01
31	E-Clip	NX090-01	NX090-01	NX090-01
32	Line Guide Carrier	CX047-01	CX047-01	CX047-01
33	Line Guide Pawl	CX006-01	CX006-01	CX006-01
34	Line Guide Carrier Washer	BV035-01	BV035-01	BV035-01
35	Line Guide Carrier Screw	ZW007-02	ZW007-02	ZW007-02
36	Kick Lever Spring	QV097-01	QV097-01	QV097-01
37	Pinion Yoke	CX025-01	CX025-01	CX025-01

Key #	Description	E600PT	E640PT	E650PT
38	Pinion Yoke Spring	CX040-01	CX040-01	CX040-01
39	Pinion Gear Assembly	VW311-01	CX311-01	ZW311-01
40	Release Slider Spring	CX104-01	CX104-01	CX104-01
41	Thumb Bar Screw	ZW053-01	ZW053-01	ZW053-01
42	Release Slider	CX039-01	CX039-01	CX039-01
43	Kick Lever	CX077-01	CX077-01	CX077-01
44	Thumb Bar	CX009-01	CX009-01	CX009-01
45	Crank Shaft Ball Bearing -L	SW017-01	SW017-01	SW017-01
46	E-Clip	QW120-01	QW120-01	QW120-01
47	Crank Shaft Retainer	CX002-01	CX002-01	CX002-01
48	Crank Shaft Retainer Screw	JX107-01	JX107-01	JX107-01
49	Crank Shaft	CX008-01	CX008-01	CX008-01
50	O/S Drive Gear	ZW112-01	ZW112-01	ZW112-01
51	Trip Ratchet	QW083-01	QW083-01	QW083-01
52	Trip Ratchet Washer	QW111-01	QW111-01	QW111-01
53	Drive Gear	HV012-01	CX012-01	XV012-01
54	Drag Disc	HV059-01	HV059-01	HV059-01
55	Drag Key Washer	HV045-01	HV045-01	HV045-01
56	Link	HV036-01	HV036-01	HV036-01
57	One Way Clutch Sleeve	HV052-01	HV052-01	HV052-01
58	Gear Side Cover Assembly	CX324-03	CX324-05	CX324-04
59	Spool Tension Knob O-Ring	QW101-01	QW101-01	QW101-01
60	Spool Tension Knob Ball Bearing	SW117-01	SW117-01	SW117-01
61	Spool Tension Washer	QW032-04	QW032-04	QW032-04
62	Spool Tension Collar	QW081-01	QW081-01	QW081-01
63	Spool Cushion Washer	QW082-01	QW082-01	QW082-01
64	Spool Tension Knob Assembly	CX333-01	CX333-01	CX333-01
65	Drag Click Spring Assembly	ZW4114	ZW4114	ZW4114
66	Spring "D" Washer	QW046-02	QW046-02	QW046-02
67	Star Drag Washer	ZW032-02	ZW032-02	ZW032-02
68	Star Drag Assembly	CX355-03	CX355-04	CX355-02
69	Handle Washer	QW054-01	QW054-01	QW054-01
70	Handle Assembly	CX318-01	CX318-01	CX318-01
71	Handle Nut	RV003-01	RV003-01	RV003-01
72	Handle Nut Cap	RV034-04	RV034-04	RV034-04
73	Worm Shaft Ball Bearing	XX117-01	XX117-01	XX117-01